



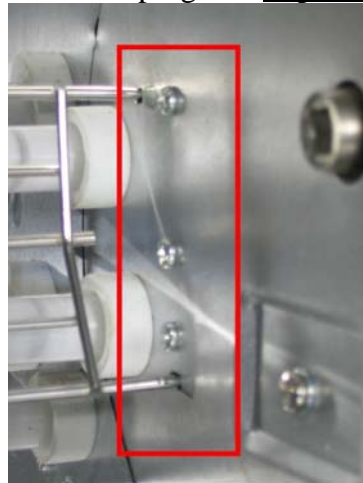
# Behmor Inc.

## Update 3- Important Maintenance Procedures

May 27, 2009

In order to insure your Behmor 1600 roasts as it did when you first received it you must follow simple maintenance procedures as described below.

- 1) After every five (5) roasts we strongly recommend you do the system dry burn by placing the cylinder (empty) and chaff tray in the oven chamber as if doing a roast, close the door, press ½ then start. Repeated from the manual
- 2) We also strongly urge you regularly clean the interior with Simple Green or other non-caustic, non-abrasive cleaners ( NO- Easy Off, Bon Ami, Ajax, Comet etc ) to insure there is no sediment build-up blocking a key sensor. The area of the sensor is in that must be kept clean of oils and sediment is shown below in the red box. We suggest including this Simple Green cleaning of the interior as a part of your regular dry burn maintenance program. Repeat of 02.06.08/ Update 1



**Failure to perform this cleaning will lead to longer roaster times and possible equipment failure**

- 3) We also strongly urge you clean your DC fan's impellers (see below) every four months or sooner, if necessary. While not true in all locations if you roast in an area of high dust, or other airborne matter the impellor blades of the fan will get coated in the dust, lint etc and will cause the system's roast times to become extended.

This procedure is accomplished by removing the six screws holding the right outside panel in place. You will need a Philips head screwdriver.

Once the panel is removed a few strong gusts of air on the impellers should remove the lint, dust etc. We then suggest you plug in the roaster and press cool

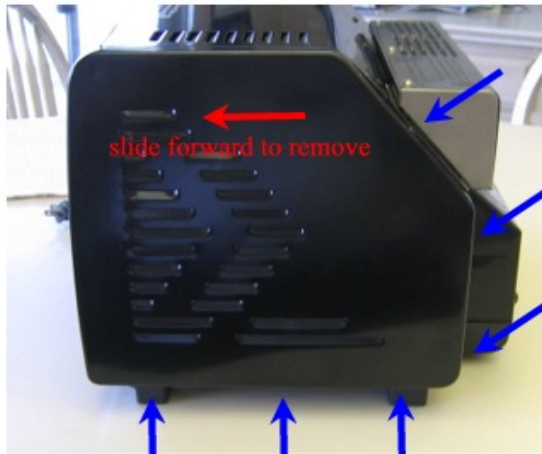
**120 Country Club Dr. Suite 22-L Incline Village, NV 89451**  
**775-833-3363 www.behmor.com**



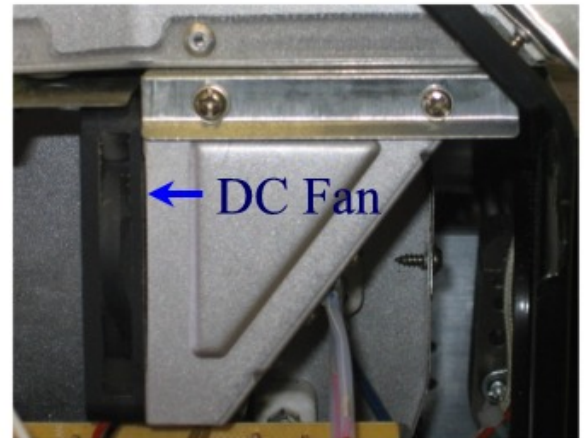
# Behmor Inc.

to insure the fan is rotating properly. If not contact tech support.

## Update 3- Important Maintenance Procedures cont.

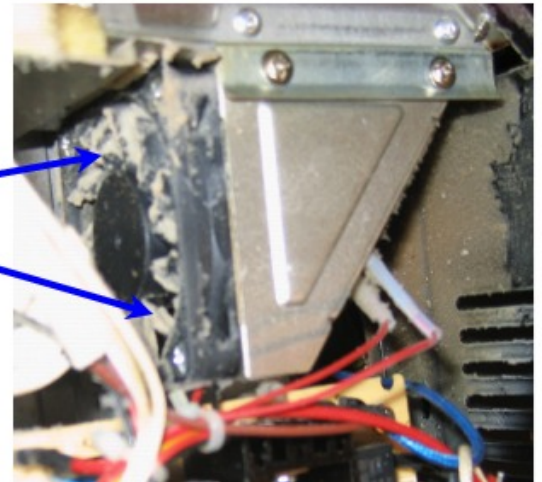


screws



DC Fan

Lint, dust build up to be cleaned



**Failure to perform this cleaning will lead to longer roaster times should a build-up of dust, lint and/ or other airborne particulate matter occur, while at the same time possibly lead to a fans earlier than expected, end of design life.**